

# **OFFICE OF THE CONTROLLER**

## **Capital Assets**

### **Physical Inventory Training for the Inventory User**

**February 2026**





# Table of Contents

Criteria for an Asset	3
Physical Inventory Process	5
Additional Information and Dates	15
Resources and Contacts	18



# Criteria for an Asset



UNIVERSITY OF  
**South Carolina**

# Criteria for an Asset

- An asset is defined as furniture, fixtures and equipment that has a value of \$5,000 or greater and having a useful life of over 1 year.
- Software with a purchase price at or above \$100,000 also qualifies as a capital asset.
- Firearms and Works of Art are considered assets regardless of cost.



# Physical Inventory Process



UNIVERSITY OF  
**South Carolina**

# Overview of Process



**This session will focus on the role of the Inventory User.**

# Using the Physical Inventory Page in Finance PeopleSoft

To update asset physical inventory information, inventory user will need to navigate to the asset inventory review/update page.

**Navigation: Main Menu > Asset Management > Physical Inventory > USC Inventory Review & Update**

This page presents all the assets for which a user is responsible. It is where inventory users indicate whether an asset has been located (verified) or why the asset has not been located (transferred, lost, destroyed, etc.).



# Review/Update Page

Now let's walk through everything Inventory Users can do on the Inventory Review/Update page.

1. Use the **Inventory Code (INV Code)** field to mark an asset as Verified (located) or Transferred, Lost, etc.
2. Use the **Inventory Status (INV Status)** field to indicate that an asset is ready to be approved (pending approval).
3. Utilize the **Apply To All** buttons in the page header to efficiently update the Inventory Status and Inventory Code for multiple assets.
4. Utilize the **Filters** in the page header to limit the number of assets displayed.



# Inventory Codes

Use the **Inventory Code** field to mark an asset as Verified (located) or Transferred, Lost, etc.

- **Verified:** The asset was physically located.
- **Transferred:** The asset was moved to another department at USC
- **Consolidated:** The asset was sent to Consolidated Services. This is the department's process to scrap, sell, or donate an asset.
- **Lost:** USC no longer possesses the asset because it was lost.
- **Stolen:** USC no longer possesses the asset because it was stolen.
- **Destroyed:** USC no longer possesses the asset because it was destroyed.
- **Cannibalized:** USC no longer possesses the asset because it was dismantled and used for parts.



# Inventory Codes and Required Submissions

- All submissions to the Capital Asset Team can be sent to [PHYSINV@mailbox.sc.edu](mailto:PHYSINV@mailbox.sc.edu).
- The Capital Asset Transfer Form can be found on the [Controller's Office Capital Asset](#) webpage.
- Form 7 can be found on the [Purchasing Toolbox](#) webpage in the Purchasing Forms section.
- Form 8 be found on the [Purchasing Toolbox](#) webpage in the Purchasing Forms section.

Inventory Code	Required Form/Email
Verified	No submission required
Transferred	Capital Asset Transfer Form signed by transferring and receiving departments
Consolidated Services	Form 7 signed by Consolidated Services
Lost and Destroyed	Form 8 and Police Report only required if net book value of asset is greater than \$5,000
Stolen	Form 8 and Police Report
Cannibalized	Direct email notification

# Inventory Status Field

Use the **Inventory Status** field to indicate that an asset is ready to be approved.

- **Not Reviewed:** Assets that have not yet been involved in the Physical Inventory Process.
- **Pending Approval:** Will send the asset to an Inventory Approver to be approved or rejected.
- **Approved:** An Inventory Approver has approved the inventory transaction.
- **Rejected:** An Inventory Approver (or the Capital Asset Team) has rejected the inventory transaction. An email will be sent to the Inventory User.
- **Posted:** Inventory Code and asset information updates have been posted to the core AM tables.

**Inventory Users can only select Not Reviewed and Pending Approval**



# Apply To All Buttons

Utilize the **Apply To All** buttons in the page header to efficiently update the Inventory Status and Inventory Code for multiple assets.

- The button will set Inventory Status or Inventory Codes to the selected value on all rows currently displayed and available for update.
- It will **not**, for example, update the Inventory Status on any row where the Inventory Status is “Posted” because Inventory Users cannot change rows with this Inventory Status.
- Inventory User can only update rows when Inventory Status is Not Reviewed and Pending Approval.



# Filters

Utilize the **Filters** in the page header to limit the number of assets displayed.

- Inventory Status
- Inventory Code
- Inventory Department
- Operating Unit
- Asset ID
- Tag Number





# Demonstration

- Using the Inventory Review & Update page.



# Additional Information and Important Dates



UNIVERSITY OF  
**South Carolina**

# Physical Inventory: Additional Information

Your point of contact throughout this process will be the Capital Asset Team  
[PHYSINV@mailbox.sc.edu](mailto:PHYSINV@mailbox.sc.edu).

Your Capital Asset Team:

- Rebecca DeNisi: [DENISI@mailbox.sc.edu](mailto:DENISI@mailbox.sc.edu)
- Jaime Snelling: [SNELLIJW@mailbox.sc.edu](mailto:SNELLIJW@mailbox.sc.edu)

Policy	Procedure
<a href="#">FINA 2.82 [pdf]</a> - Asset Management	<a href="#">FINA 2.82 Procedure [pdf]</a> - Asset Management



# Important Dates

- The annual Physical Inventory process will **begin** Thursday, **March 5, 2026**.
- You will be granted access to the Physical Inventory system on that date.
- We will communicate specific deadlines with College/Departments based on inventory size.
- If College/Departments have questions regarding specific deadlines, email them to [PHYSINV@mailbox.sc.edu](mailto:PHYSINV@mailbox.sc.edu) by **April 1**.



# Resources and Contacts



UNIVERSITY OF  
**South Carolina**

# Physical Inventory Resources

- [Capital Asset Account Code Matrix](#)
- [Capital Asset Update Form](#)
- [Capital Asset Transfer Form](#)
- [Equipment Build Form](#)
- [Physical Inventory User Job Aid](#)
- [Physical Inventory Approver Job Aid](#)





## Office of the Controller

## Office of the Controller

## General Accounting

Accounts Payable

➤ Capital Assets

Card Programs

Chart of Accounts

General Ledger

Miscellaneous Accounts  
Receivable

Relocation

Travel

Treasury Management

General Accounting Staff  
DirectoryGrants and Funds  
ManagementCompliance and Tax  
Management

## Payroll Department

Operational Management  
and Reporting

## Capital Assets

The Capital Assets Team is responsible for tracking all assets retained by the University, this includes Capital Construction Projects and accounting for the University's Debt Service. The Governmental Accounting Standards Board (GASB) has determined that certain contractual obligations are to be recorded as an asset. These are agreements for property and equipment leases, IT subscriptions, and partnership arrangements with other public and private institutions.

Capital Asset Account Code Matrix

Expand all



Capital Assets



GASB 87: Leases



GASB 96: Subscription-Based IT Arrangements



GASB 94: Public-Private &amp; Public-Public Partnerships



Capital Construction Projects

Contact Capital  
Assets

For questions about any  
Capital Asset services, please  
contact us directly:

1600 Hampton Street, 6th  
floor

Columbia, SC 29208

Email:

[physinv@mailbox.sc.edu](mailto:physinv@mailbox.sc.edu)

# Where to Find Capital Asset Resources

Visit the Controller's  
Office website for Capital  
Assets information.



## Office of the Controller

Office of the Controller

General Accounting

Grants and Funds  
Management

Compliance and Tax  
Management

Payroll Department

Operational Management  
and Reporting

External Financial Reporting  
and Transparency

Resource and Training  
Toolbox

➤ **Business Manager**

Grant Administration

Principal Investigator

Policies & Procedures

Forms

Newsletters

PeopleSoft Finance Training  
Schedule

Listservs

Social Media

Contact Us

### Business Manager

The role of each Business Manager at the University of South Carolina varies across each college and department. Each Business Manager handles several responsibilities that directly influence the success of their departments and the University overall. They provide business expertise on a variety of topics including, but not limited to budget, expenses, supplier onboarding, transaction corrections, and University policies and procedures.

Below is a list of tasks a Business Manager may be responsible for within their college/department. Sections include links to training resources that support each task.

**Note:** Each year the Controller's Office provides refresher trainings starting the month of February thru the end of April. Registration links for all scheduled trainings are sent to our BIZMANAGER listserv end of January, provided in our monthly newsletter, and in a prior week reminder email. On demand training can be found in the sections below.

**Account Funding Change**

Expand all



**AP Uploads**



**Cash Advances**



**Cost Transfer**



**Departmental Deposits**



**Employee Reimbursement (Non-travel)**



**Endowments**



**Finance Intranet**



**Finding Valid Chartfield Strings**



# Where to Find the Resources

Visit our [Business Manager](#) page for Physical Inventory training resources.





## Purchasing

[Purchasing Home](#)[COVID-19 Supplies](#)[Our Staff](#)[Solicitations and Awards](#)[Procurement Card](#)[Purchasing Toolbox](#)[Small and Minority Business](#)[Consolidated Services](#)[Sustainable Initiatives](#)

### Purchasing Toolbox

We have a range of forms, documents, and helpful resources to assist you with tasks related to purchasing.

Expand a section to reveal its links and/or documents.

Expand all

[Solicitation System](#)[Amazon Business](#)[Customer Service](#)[State Contracts](#)[P-Card Resources & Forms](#)[Purchasing Forms](#)

[COVID-19 Supplies Internal Order Form \[URL\]](#) - This form sends an email directly from the website to Purchasing's COVID-19 Supplies inbox with the included responses. A confirmation message appears when the form is successfully submitted.

[Property Turn-in/Transfer Form 7 \[PDF\]](#) 

[Inventory Control Deletion Request Form 8 \[PDF\]](#) 

[Justification for Conference Site Selection Form \[PDF\]](#) 

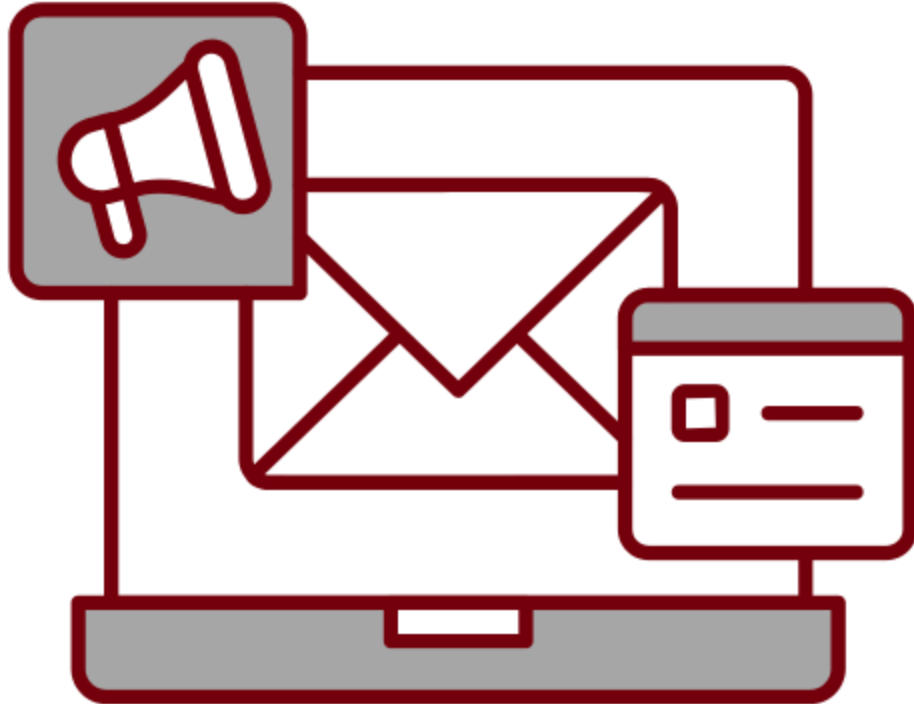
[Nonresident Taxpayer Registration Affidavit Income Tax Withholding Form \(I-312\) \[PDF\]](#) 

# Where to Find the Resources

If you need to complete a Form 7 or a Form 8, visit the [Purchasing website](#).



# Contact Us



For specific questions, please visit our [website](#) to find the appropriate contact.



UNIVERSITY OF  
**South Carolina**

# Questions



UNIVERSITY OF  
**South Carolina**

# THANK YOU!

## Office of the Controller



Alone, we can do so little; together,  
we can do so much.



**Address:**

1600 Hampton Street  
Columbia, SC 29208



**Contact Number:**

Phone: 803-777-2602  
Fax: 803-777-9586



**Email Address:**

[controller@sc.edu](mailto:controller@sc.edu)



UNIVERSITY OF  
**South Carolina**



UNIVERSITY OF  
**South Carolina**